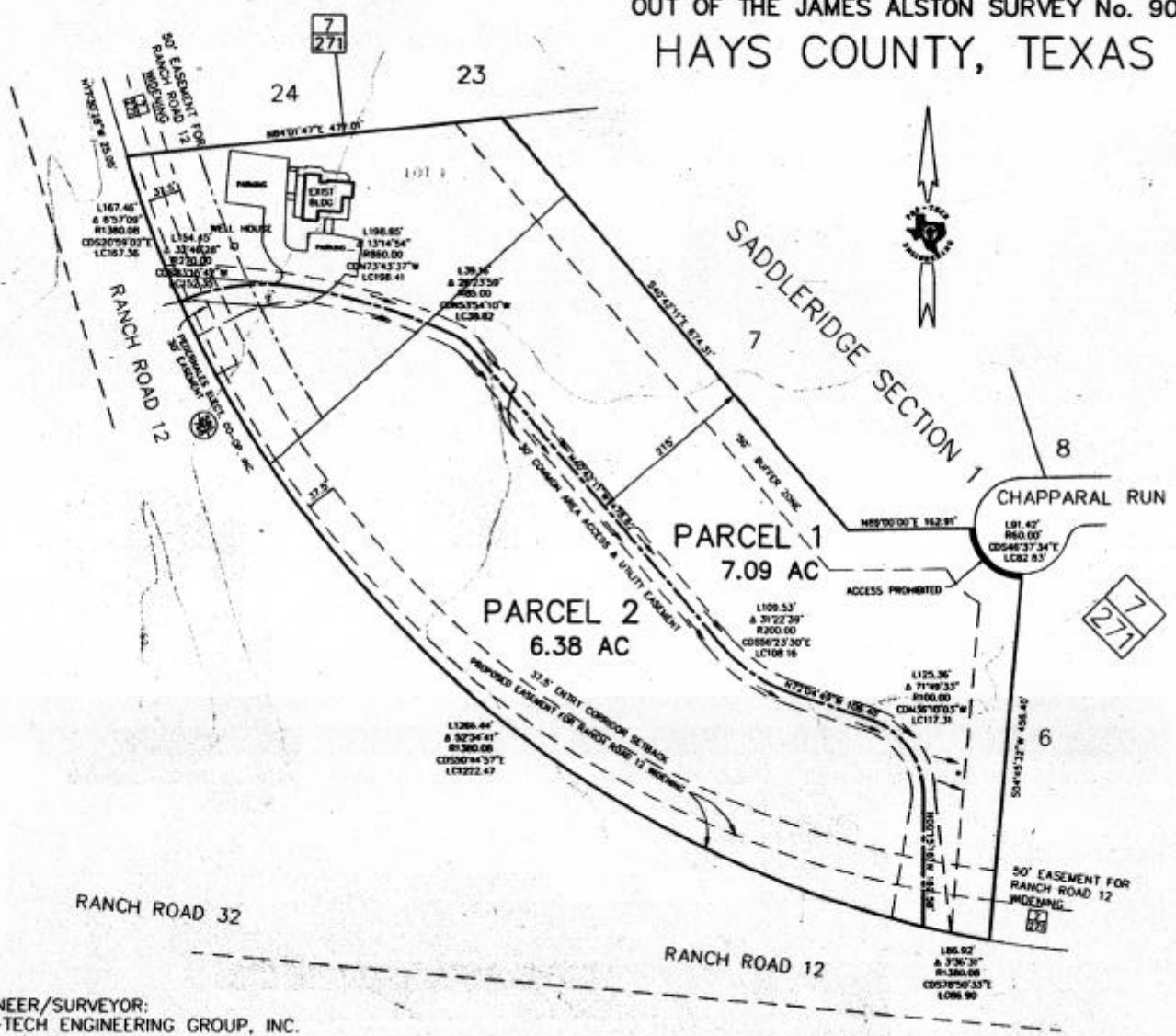
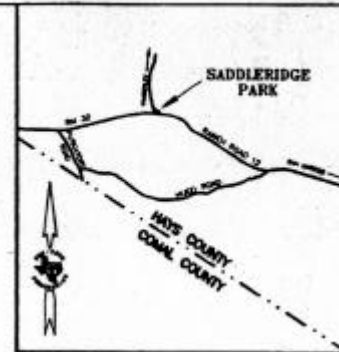


CONCEPTUAL PLAN SADDLERIDGE BUSINESS PARK

A PLANNED DEVELOPMENT DISTRICT OF 13.47 ACRES
OUT OF THE JAMES ALSTON SURVEY No. 90
HAYS COUNTY, TEXAS



LOCATION MAP
N.T.S.

ALLOWABLE USES

PARCEL 1	PARCEL 2
0-2 OFFICE LIGHT RETAIL	0-2 OFFICE ADMINISTRATIVE & PROFESSIONAL OFFICES RETAIL SALES & SERVICES, LIMITED CHILD CARE EATING ESTABLISHMENTS: SIT DOWN (WITH CARRYOUT CAPABILITY ALLOWED) ANIMAL SALES & SERVICES: GROOMING ARTS & CRAFTS SALES & INSTRUCTION COMMERCIAL / SINGLE FAMILY RESIDENTIAL MEDICAL SERVICES LIMITED PERSONAL SERVICES LIMITED BARR/ SAVINGS AND LOAN ACCESSORY USES TO MAIN USE SINGLE FAMILY RESIDENTIAL CONVENIENCE SALES & PERSONAL SERVICES HOTEL / MOTEL

MAJOR DRAINAGE ROUTING

APPLICANT/OWNER:
 RIVER CHASE VENTURES
 P.O. BOX 1629
 WIMBERLEY, TEXAS 78676
 (512) 847-5263

ENGINEER/SURVEYOR:
 PRO-TECH ENGINEERING GROUP, INC.
 100 E. SAN ANTONIO ST., SUITE 100
 SAN MARCOS, TEXAS 78666
 (512) 353-3335

E.O. 14573

855C:\DWG\14573\PRO\PLAT\PLAT1.DWG

SADDLERIDGE PARK
 JANUARY 3, 2003
 REVISED JUNE 16, 2003
 REVISED FEB 27, 2004
 SHEET 1 OF 1



SCALE 1" = 100'